

## EN-20-05.01 DATA SHEET

### MODEL DESIGNATORS FOR SPECIFICATION TAG

DESIGNATOR	MODEL	NOTES	VALID OPTION SUFFIXS
101	1091	DISCONTINUED	S
102	1092		T, S
103	1093		T, S
104	1094		T, S
105	1095		T, S
106	1096		T, S
111	MD-81	DISCONTINUED	S
112	MD-82	DISCONTINUED	S
121	K-16		T, S
122	K-20		T, S
130	LD-80		T, S
135	WPG (FORD X)	DISCONTINUED	S
136	WPG (CHEVY Y)	DISCONTINUED	S
137	WPG (DODGE)	DISCONTINUED	S
140	P80		T, S
142	RZ-10		S
143	BZ-15		S
144	RZ-20		S
145	BZ-20		S
146	BZ-22		D, E, S
147	BZ-33		D, E, S
148	BZ-44		E, S
150	Foco Slider		
154	WZ-44Z		S
160	VZ-50		
202	F-20	OBSOLETE	
202R	F-20 RI		E, P, S
203	F-30	OBSOLETE	
203R	F-30 RI		P, S
204	F-40		E, P, S
207	FW-20	OBSOLETE	
207R	FW-20 RI		E, P, S
208	FW-30	OBSOLETE	
208R	FW-30 RI		E, P, S
211	FSL-25		P, S
212	FSL-20		P, S
213	FSL-30		P, S
214	FSL-40		P, S
215	FSL-50	DISCONTINUED	P, S
221	C-15	OBSOLETE	
221R	C-15 RI		L, P, T, S
222	C-20	OBSOLETE	
222R	C-20 RI		L, P, T, S
225	LPF-30		S
226	LPF-40		S
232	SL-20		S, T
233	MPF-25		S
234	MPF-33		S

## MODEL DESIGNATORS FOR SPECIFICATION TAG

Cont.

DESIGNATOR	MODEL	NOTES	VALID OPTION SUFFIXS
235	EZL-25		P, S, T
236	EZL-30		P, S, T
242	D-20	OBSOLETE	
243	D-30	OBSOLETE	
255	EURO	OBSOLETE	
262	E-25	OBSOLETE	
262R	E-25 RI		P, S, T
263R	E-30 RI		P, S, T
273	WSL-30		S
274	WSL-40		S
280	SDL-1000		S
301	1290		S
302	1291		S
311	WDLBG-35 RM	96" WIDE	S
312	WDLBG-40 RM	96" WIDE	S
313	WDL-35 RM	96" WIDE	S
314	WDL-40 RM	96" WIDE	S
315	WDL-50 RM	96" WIDE	S
316	WDL-60 RM	96" WIDE	S
321	WDLBG-35 RM	102" WIDE	S
322	WDLBG-40 RM	102" WIDE	S
323	WDL-35 RM	102" WIDE	S
324	WDL-40 RM	102" WIDE	S
325	WDL-50 RM	102" WIDE	S
326	WDL-60 RM	102" WIDE	S
330	MDR-125	OBSOLETE	
331	MDR125 AF	OBSOLETE	
335	MDR-160	OBSOLETE	
336	MDR-160 AF	OBSOLETE	
344U	ACL500E		S
344U	ACL750E		S
340	ACL16		L, S
341	ACL16 AF		S
342	ACL20	2000 STD	C, S
343	ACL20 AF	2000 AF	S
344	ACL	EXT BED	C, E, S
349	WPG12	DISCONTINUED	S
349E	WPG12	DISCONTINUED	S
352	RGL-20 CC	DISCONTINUED	
353	RGL-30 CC	DISCONTINUED	
354	RGL-40 CC	DISCONTINUED	
355	RGL-50 CC	DISCONTINUED	
356	RGL-60 CC	DISCONTINUED	
363B	RBGL-30	96" WIDE / BRAKE	S
364B	RBGL-40	96" WIDE / BRAKE	S
372B	RGL-20	96" WIDE / BRAKE	S
373B	RGL-30	96" WIDE / BRAKE	S
374B	RGL-40	96" WIDE / BRAKE	S

# MODEL DESIGNATORS FOR SPECIFICATION TAG

Cont.

DESIGNATOR	MODEL	NOTES	VALID OPTION SUFFIXS
375B	RGL-50	96" WIDE / BRAKE	S
376B	RGL-60	96" WIDE / BRAKE	S
382B	RGL-20	102" WIDE / BRAKE	S
383B	RGL-30	102" WIDE / BRAKE	S
384B	RGL-40	102" WIDE / BRAKE	S
385B	RGL-50	102" WIDE / BRAKE	S
386B	RGL-60	102" WIDE / BRAKE	S
390	MDR-125 RM		C, S
391	MDR125 AF RM		C, S
395	MDR-160 RM		C, S
396	MDR-160 AF RM		C, S
397	MDR-200 RM		S
398	MDR-200	OBSOLETE	
399	MDR-200 AF RM		S

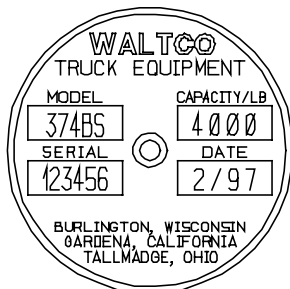
## WAREHOUSE DESIGNATORS

DESIGNATOR	LOCATION
M	Marietta, GA
T	Dallas, TX old units may also have a D designator
B	Burlington, WI
P	Portland, OR (closed)
F	Indianapolis, IND
A	Birmingham, ALA
S	Syracuse, N.Y.

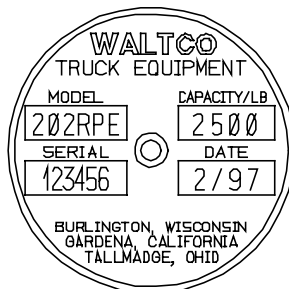
### Option suffixes:

- |   |  |
|---|--|
| A = Above floor travel                        | M = Medical lift                       |
| B = Brake system                              | P = Power down                         |
| C = Cam Close                                 | R = Reduced maintenance                |
| D = Reinforced platform (Drive over platform) | <b>S = Special (modified) liftgate</b> |
| E = Extended bed height                       | T = Thermalpak                         |
| L = Low bed height                            | U = European liftgate                  |

### EXAMPLES:



Special RGL-40



F-20 with three options  
Reduced Maintenance  
Power Down  
Extended Bed Height

Example of serial number: M4567